



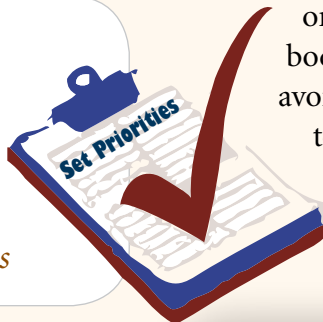
CHIEF & COUNCIL SET PRIORITIES

by Joe Delaronde

Chief and Council recently convened a special session to set their priorities for the 2006-2009 term. For two days (November 21-22) the Chiefs, with participation of the MCK's political staff, distilled the many issues facing the community into four main priorities:

Council Priorities:

- *Reconciliation with the Community*
- *Nation Building*
- *Intergovernmental Relations*
- *Policy Reform for Programs and Services*



The real key to success will be whether or not the MCK will be able to stay on task. One of the exercises in the session was one that compared Canada's and the United States' long-term goals and whether or not they had succeeded in following through on their plans (for the most part, the two countries have been remarkably consistent in this regard). In order for Kahnawake to succeed, the political body will need to "maintain the course" and avoid, within reason, knee-jerk over-reaction to issues of the day. An organized plan is always preferable to a scatter-shot approach and ensures easier follow-up and more measurable results.

A community survey conducted in September, in which community members were asked what they thought Council's priorities should be, was used as a resource for the meetings. The community's list included topics/subjects such as Border Crossing, Community Protection and the Seigneurie of Sault St. Louis. Chiefs and Council incorporated those into their four priorities. For example, Border Crossing, the community's number one concern, is included in two of the Council's priorities:

Nation Building and Intergovernmental Relations.

At the end of the sessions, Chief and Council decided that the priorities will serve as the cornerstones for the following political actions:

- **Development of the Justice System**
- **Membership/Citizenship**
- **Border Crossing**
- **Seigneurie**
- **Lands**
- **Community Protection.**

continued on page 3

WHAT'S INSIDE...

CHIEFS UNCUT



PAGE 2

HOLIDAY TRAIN



PAGE 3

PASSPORTS



PAGE 4

GIFT GIVING



PAGE 7



KWE KWE! by Justus Polson-Lahache

Ahh, the holidays... and still no snow!? (At least, at the time of printing)



Can Christmas and New Year's be the same without it? Of course. The recipe is simple: rest and relaxation. Anything else is just the icing on the cake. Now, dipping your finger in this icing is as simple as spending time with family, friends, or even just recharging your batteries.

As you are sitting around the fire, sipping egg-nog or restoring your breathing from those exhausting shopping mall visits, I invite you to explore this relaxing edition of Onkwarihwa'shon:a. This edition

HAPPY HOLIDAYS!



will update you on Chiefs Priorities, Seignery, or on the Commercial Land Use Policy, to name a few. Take a seat, start flipping pages and get valuable rest before we see you in the new year. Who knows, maybe by then, we'll have snow to set prints for the new year.

CHIEFS UNCUT



As you may have already seen on Channel 3, the MCK is now broadcasting "**Chiefs Uncut**".

The show hosts two or three rotating Chiefs as they speak to the community on issues they are working on. The premiere show aired on November 3, and is expected to continue every Friday. Chiefs Uncut will air its first show of 2007 on **January 12**.

PEACEKEEPERS ETHICS COMMITTEE

The MCK has selected The Peacekeepers Ethics Committee (PEC), comprised of 5 community members. These members are Trina C. Diabo, Brian Goodleaf, Dale Jacobs, Lionel Jacobs and Joyce Rice.



Their roles ensure concerns or issues relating to complaints regarding conduct of the Kahnawá:ke Peacekeepers can be discussed. The term of office for the PEC is four years.



CHIEF PRIORITIES continued from page 1

Finally, as a further example of the complexities of the political landscape, another community priority (the tobacco industry) falls under several of these political actions. The challenge for the MCK will be to develop/maintain this and other

files with a balanced approach that considers how one political action impacts on another. With the list of priorities now clear, it is hoped that this will be easier to accomplish.

GAMING SUSPENDS PERMIT

Due to criminal charges laid against the principal of WSC Management Inc., the Kahnawake Gaming Commission has suspended its Client Provider Authorization. The alleged charges state that the principal of WSC conspired with persons linked with organized crime in Montreal. Until further information is provided about the allegations, the suspension of WSC's permit will continue.

HOLIDAY TRAIN

The holiday train passed through Kahnawá:ke on November 29th, and was greeted by over 1500 excited Kahnawakehró:non. An entrance with Joe Delaronde waving from inside the train, followed by entertaining musical performances, made this event one to remember.

SSSL COMMUNITY CONSULTATION

by David Lahache

An independant group , contracted by the Mohawk Council of Kahnawake, consulted with community members on the Seigneurie of Sault St.Louis from August to October 2006.

The group of three researchers/consultants, led by Dr. Gerald Taiiaike Alfred, gathered information and suggestions on various aspects of the Seigneurie. A total of 133 people took part. Dr.Alfred delivered his report to Chief and Council on November 13 , 2006. The report will be reviewed and taken into consideration when consulting with the community in the future.



With huge support, the amount of donated monies and gifts has given more Kahnawá:ke families a merrier Christmas. A special thank you to all volunteers that were involved in making this year's Holiday Train a smashing success!

TRAVELING BY AIR?

In the last issue of Onkwarihwa'shon:a, we discussed the pressing issue of border crossing. As it turns out, beginning January 23, 2007, all persons traveling by air between the U.S and Canada, Mexico, Central and South America, the Caribbean and Bermuda, will be required to present a valid passport.



“Understandably, our people are very reluctant to use either Canadian or

American passports,” said Grand Chief Michael Ahrírhon Delisle, Jr. “Unfortunately at this time, these regulations are beyond the MCK’s control.” For those who apply, the MCK will issue letters of declaration/ notification stating that Mohawk Nation citizens do not consider themselves to be Canadian or U.S. citizens. As new developments occur, we will keep you informed on the MCK’s involvement.

COMMERCIAL LAND USE

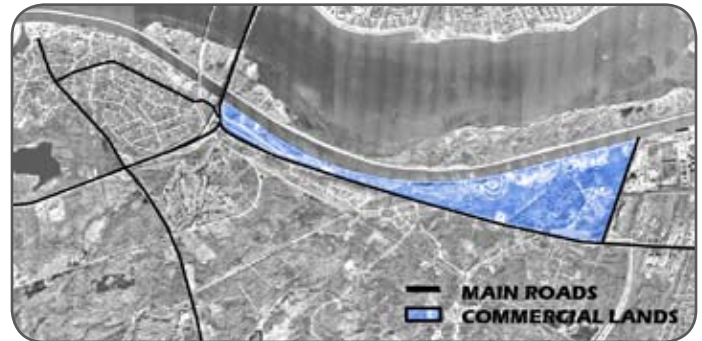
by Heather Jacobs-Whyte

The Ohontsa'shón:a Tsi Iehiatónhkwa/Lands Unit has completed the Kahnawá:ke Commercial Land Use Policy, which advocates responsible land management practices and provides procedures for effective use of commercial lands. The Mohawk Council of Kahnawá:ke Chief and Council accepted the policy on **10 Kenténha/October, 2006**.

“The Commercial Land Use Policy was developed to protect our lands and give our community members a chance to develop a business without disturbing our neighbors and community members,” said Chief Marvin Zacharie.

All businesses operating on commercial lands will be required to sign leases and pay rental fees to the MCK. Leases will be for a minimum of 5 years and there will be a maximum of 4 businesses accepted per fiscal year.

The Kahnawá:ke Commercial Land Use Policy will be reviewed for amendments every 5 years or sooner,



if necessary. The Ohontsa'shón:a Tsi Iehiatónhkwa/Lands Unit will administer the policy and estimates to have a Commercial Lands Committee operating by **Spring 2007**.

To request commercial land use, please pickup an information package at Ohontsa'shón:a Tsi Iehiatónhkwa/Lands Unit (across from the Youth Centre).

The Kahnawá:ke Commercial Land Use Policy is available to view online at www.kahnawake.com, by selecting ‘**Organization**’ and then ‘**Lands Unit**’. Please contact **Heather Jacobs-Whyte** with any questions at **450-638-9052** or at Heather.Jacobs@mck.ca.

NEW TRANSFER DEPOT

Since November 13th, the New Transfer Depot, along Seaway Road has been in full service. Regular hours of operation are:

Monday to Friday: 8am until 4pm.
Saturdays: 9am to 1pm.
Closed Sundays.

However, for the holiday season, the depot will resume regular hours, but be closed on **Christmas Day** and **New Year's Day**.

MCK CALENDAR

As you have already seen, the 2007 MCK Calendar was included with this issue. The calendar is a reflection of important issues and developments of the MCK and Kahnawá:ke in 2006 and a valuable resource for you in 2007.

Hang it on the wall and enjoy your 2007 calendar. It's our gift to you!



MCK HOLIDAY HOURS

The MCK offices will be closed for the Holiday season from Monday, December 25, 2006 to **Tuesday, January 2, 2007**. Offices will re-open the following **Wednesday, January 3, 2007**.

RECYCLING HOLIDAYS

In between the MCK holiday closures, Recycling will perform door-to-door pickup on December 27th, 28th and 29th, with no business pickup.

When operations continue on January 3, regular door to door service will continue, again with no business pickup.



PUBLIC SKATING TIMES

Every Tuesday 4:00pm to 5:00pm

Every Friday 5:00pm to 6:00pm

*except one day for Friday,
 January 26, 2007..... **4:00pm to 5:00pm**

Fridays will continue after this day from 5pm to 6pm.

SNOW PLOWS...

Kahnawá:ke Public Works has purchased two new plows for snow removal service. The plows, totalling \$396,000.00, are the newest of the 5 plow fleet.

Plowing Tips

- If you own an older vehicle, please do not park on the road. Snow may not be cleared properly if cars are on the road.
- Park in your driveway. If the plows do not fit, it may delay snow removal in your area.
- Do not shovel or plow snow onto road.

If we all do our part, Snow Removal will cost less time and money.



DISNEY ADVENTURE

Christmas came early for three Kahnawá:ke children who were part of the Dreams Take Flight adventure to Walt Disney World. This volunteer driven trip included flight and entry to the theme park, for special needs children. Several Kahnawakehró:non joined in a celebrated departure as the children embarked on the journey they will never forget.

A special thanks to organizers of the event, the MCK, KSCS, participants and of course Dreams Take Flight and Air Canada for making it all happen.



ELDERLY & DISABLED SNOW REMOVAL

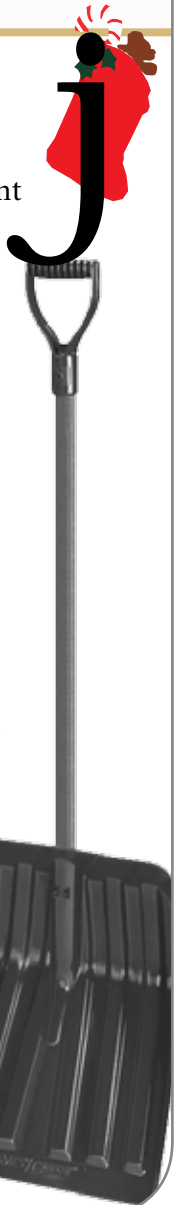
Having trouble shoveling your walk? If you are among the elderly or disabled, the Mohawk Council of Kahnawake, in participation with KSCS Home and Community Care Services, is proud to announce that the Snow Removal Program will continue for this year. The program assists elderly and disabled Kahnawakehró:non with their snow removal from **December 25th, 2006** to **April 1, 2007**.

Those in need must apply to the program, even if you were accessing it last year. To apply, or for more information, call **Sheridan Ross**, Operations Assistant at **632-7500 ext 223**.

SNOW REMOVAL TIPS

It's happened to all of us. We shovel vigorously from the front door, exhausted, as we make it to the end of the driveway. Then it happens; the snowplow passes and leaves us a great, big, load of...snow. To avoid the hair pulling results of fresh snowfall, follow a few of these tips:

- **Wait** for the plow to pass before shoveling to avoid re-shoveling the same bank.
- Use salt **only** when icy. It will slow the inevitable rusting of your vehicle.
- **Level** your snow banks by pushing them alongside your yard. Make sure not to push towards the house, or onto the road. Leveling your banks will ensure you have visibility when backing your vehicle out of the driveway.
- **Park** in your driveway. By parking on the road, the plow will pass around your vehicle. On smaller streets, it may not be able to pass. That means your street will not get plowed.



ENVIRONMENTAL GIFT GIVING by Alana Kane

We all know that at Christmas time, many unwanted gifts end-up in storage or even in the garbage. This year, make your gift count by making it thoughtful and choosing one that benefits the environment.



this gift, as it is also a gift of your time.

When you do buy gifts, consider the impact of your gift: Is it environmentally friendly and safe? Will it be reusable? Is it recyclable and/or made from recycled materials? Look for gifts that are unpackaged or minimally packaged, without unnecessary plastic wrap or cardboard backing.

No ideas? Here are a few tips:

- Keep it simple. One thoughtful gift is better than many wrapped packages of unwanted gifts. Draw names or cost share gifts with siblings or friends.
- Make your own gifts; knit, sew, or make some yummy holiday goodies and wrap them in nice Christmas tins.

You can also consider these ideas:

- Give a gym membership and contribute to the recipient's well being.
- Donate to an organization in the name of a friend or relative in a subject area of interest to them.
- Give a garden! Seeds, gloves, tools, etc. Weed, water, or help establish a friend's garden.
- Give a gift certificate for your time - child sit, or pet sit.
- Make dinner for someone or cook and deliver it to him or her. Elders seem to greatly appreciate

This Holiday Season, let's try to do things a little differently!



SKATE PARK

After a long wait for supplies and hardware, it's finally here!

While many, like Goose, are already using the park, the official opening will not happen until **Spring 2007**.

Definitely an event to look forward to. Please remember that you are skating at your own risk.

AIR POLLUTION...

Did you know...Trudeau International has changed its flight pattern, resulting in more aircrafts that fly over the community? This increase exposes us to more pollution from Jet Fuel, and is an indicator cause of scleroderma. Normally, scleroderma clusters are found in areas close to international airports (Boston, Montreal, Chicago, L.A.).

LAST WORDS...

MOHAWK COUNCIL OF KAHNAWÁ:KE

P.O. Box 720
Kahnawake Mohawk Territory
JOL 1B0

Phone: (450) 632-7500
Fax: (450) 638-5958
Email: communications@mck.ca



ONKWARIWA'SHON:A

Through this publication, the Mohawk Council of Kahnawá:ke seeks to promote awareness and dialogue by informing the community on its activities and by analyzing the important issues affecting Kahnawá:ke.

The editorials serve to provide a forum for commentary from the Mohawk Council and/or its staff, while serving as a catalyst for community input. The editorial views expressed are the sole responsibility of the author, and may not represent those of the MCK or those of the editorial staff. Please direct all correspondence to the Communications Department.

Editor / Layout

Justus Polson-Lahache

Proofreading

Neil McComber
Rick Rice
Thelma Paul

Photos

Thelma Paul
Justus Polson-Lahache

Contributors

Joe Delaronde
David Lahache
Mackenzie Whyte
Eva Johnson
Alana Kane
Heather Jacobs-Whyte
Kellyann Meloche
Richard Jacobs

FROM ALL OF US HERE AT THE MCK...



Seasons Greetings!

NEW STAFF

Eugene Diabo Communications Officer,
Operations

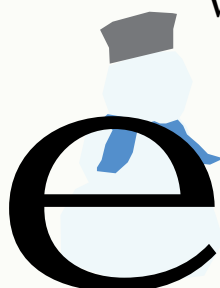
Murray Diabo Civil Engineering
Technician

Grant Lahache Recycling Depot Driver

Christina Phillips Recycling Depot
Driver

Farewell to **Sam Kirby** who is retiring at the end of December 2006 as **Justice of the Peace**, from the **Courthouse of Kahnawá:ke**. Sam was appointed in 1984 and sat on the bench since 1985.

We wish Sam the
best on his future
endeavours!



PARKING?

Did you know parking your vehicle(s) on the road during a snow storm can delay service to your area? If the truck doesn't fit, they cannot plow it.

PARKING?

Starting November 1 and ending on April 1, it is **PROHIBITED** to leave any vehicle parked on the streets of Châteauguay between the hours of 1 a.m. and 7 a.m., in accordance with Châteauguay bylaws.

Please be careful, as fines range from \$20 and \$50 for each offense. In extreme cases, vehicles may be towed at the owner's expense. Please obey parking signs to avoid the costly consequences.