



# Kahnawà:ke Ratitsénhaiens

Mohawk Council of Kahnawà:ke

P.O. Box 720 Kahnawà:ke Mohawk Territory JOL 1B0

Phone: (450) 632-7500 Fax: (450) 638-5958

Web Site: [www.kahnawake.com](http://www.kahnawake.com) E-mail: [communications@mck.ca](mailto:communications@mck.ca)

Enhsakotò:kénhte Nitiotié:ren Tsi Ietsenhaientákhwa

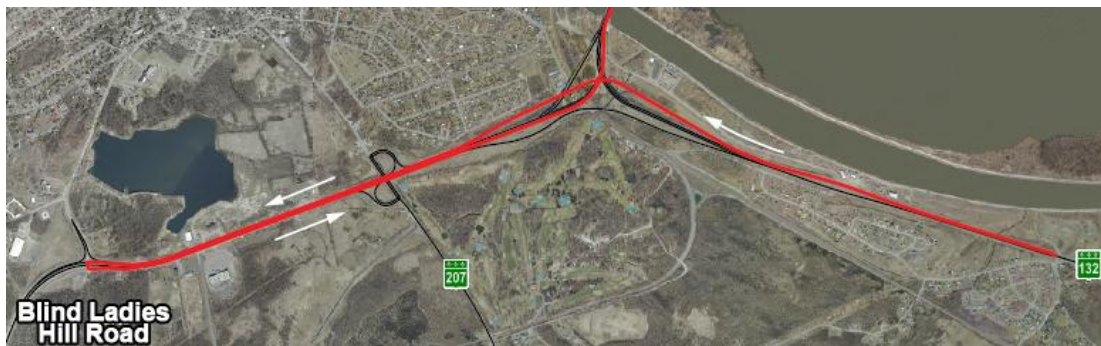
## PUBLIC SERVICE ANNOUNCEMENT

### Mercier Bridge closure this morning and upcoming weekend closure

**(Kahnawake – 2, Onerahthkó:wa/May 2014)** The Mohawk Council of Kahnawà:ke (MCK) would like to inform road users that the Ministère des Transports du Québec (MTQ) has two sets of closures on the Mercier Bridge, beginning today.

From 10am until 1pm this morning (Friday), mobile patching work on both directions of the bridge (including access ramps) will require a lane closure in the area where the work is being performed. The weekend work will close both Kahnawà:ke-bound lanes of the Mercier Bridge on Saturday, May 3<sup>rd</sup> at 3am until Monday, May 5<sup>th</sup> at 5am.

One lane heading in each direction will be available on the Montreal-bound side of the bridge. The 132 up-ramp from La Prairie will also be closed. Traffic will be detoured to Route 138, with a U-turn at the intersection by Blind Ladies Hill road. (see map)



Due to the scheduled work on the bridge, and increased traffic on its approaches, the MCK has granted permission to CITSO and other bus companies, use of the Multi-Purpose lane after hours and on the week-end. This will help reduce the impact on traffic related delays for public transit users.

The MCK reminds the public that works/closures on the Mercier Bridge are subject to change due to weather conditions, operational constraints or work progression, and that it does not take part in the scheduling or cancellation of such works.

#### **SUGGESTED INSTRUCTIONS FOR MEDIA**

Please mention at your discretion up until Tuesday, April 22<sup>nd</sup> at 5am.

For information on this release contact Justus Polson-Lahache at 450-632-7500 ext. 2267